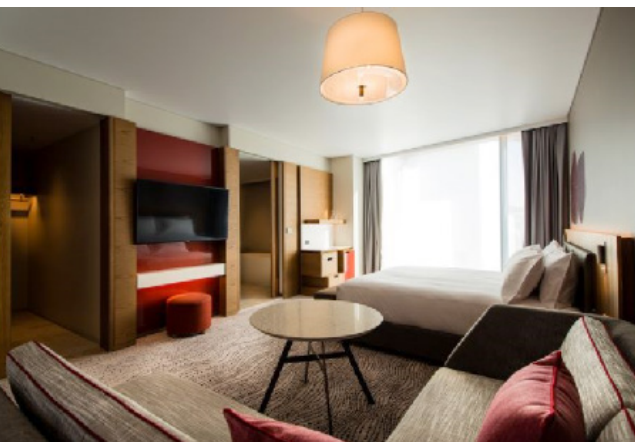


# CROWNE PLAZA HOBART



Crowne Plaza Hobart is open and welcoming guests, with the property's opening, marking the return of the InterContinental Hotels and Resorts organisation to Tasmania after many years.

The 235-room newbuild hotel on Liverpool Street offers guests views of either Hobart's Constitution Dock and the harbour or Mount Wellington and also includes the city's first Club Lounge offering guests evening canapes and beverages.



The hotel is the first of the brand's properties in Australia to feature the business-friendly 'Future of Crowne Plaza' brand concept, which includes elements such as on-demand meeting space and embedded in-room technology designed to help guests maximise their stay with designated areas encouraging work, recreation and rest.

Reitech, a leading Hospitality Technology, AV and IT Security Consultancy, was appointed to the project to manage all their in-room Hotel TV selections. Yardley Hospitality were engaged to manage the supply and installation of Hotel TVs. Since technology is a key feature of the hotel, Yardley supplied and installed the Samsung AJ690 Series 55" and 65" providing guests with a brilliant UHD display that provides brilliant picture quality and easy access to guests' favourite entertainment during their stay.



Each Samsung hospitality display includes an intuitive, customisable home menu that streamlines content exchange between hotels and guests. Content managers can easily incorporate images, logos and feature icons specific to guest needs whilst reinforcing special offers and hotel branding.

The Crowne Plaza Hobart is a wonderful choice for your next visit to Hobart.



Contact Paul or Inger Yardley to discuss your Hotel TV options  
T 1300 659 053 M 0412 974 878  
E [paul@yardley.com.au](mailto:paul@yardley.com.au) E [inger@yardley.com.au](mailto:inger@yardley.com.au)  
W [www.yardley.com.au](http://www.yardley.com.au)

